

SmarterAccess

Intelligent Access Control

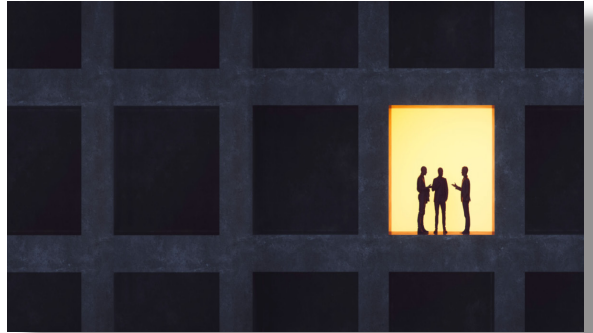
SmarterAccess is an award-winning, Mercury-based intelligent Physical Access Control System (PACS).



Unlike legacy access control systems that are static, siloed and vulnerable, SmarterAccess is the only solution that can automatically adjust access permissions based on abnormal behaviors or data from other sources.

Enterprises demand more data-driven and cyber-secure access solutions, but legacy solutions were never designed for today's data-rich and dynamic world.

It's time for a problem-solving system that harnesses life-saving data and context from the myriad of physical and logical inputs.



It's time for SmarterAccess.

Why SmarterAccess?

KEY BENEFITS

- | | | | | |
|--|--|---|---|---|
| <p>1 HIGHER SECURITY</p> <p>Advanced technology for superior access control</p> <ul style="list-style-type: none"> ▪ Detects abnormal credential behavior ▪ Detects unsafe environments ▪ Detects operator collusion | <p>2 PINPOINT ACCURACY</p> <p>Intelligence drastically reduces false alarms</p> <ul style="list-style-type: none"> ▪ Differentiates normal and abnormal activity ▪ Increases operator focus, avoiding alarm fatigue | <p>3 UNSURPASSED VALUE</p> <p>Legacy-friendly solutions inject value to ROI</p> <ul style="list-style-type: none"> ▪ Vastly reduced installation and Opex ▪ Utilizes most existing hardware, databases, policies ▪ New operational efficiencies | <p>4 FUTURE-PROOF CONTROL</p> <p>Designed for today's and tomorrow's security challenges</p> <ul style="list-style-type: none"> ▪ IT-preferred architecture ▪ Integrates multiple PACS ▪ Cloud-friendly | <p>5 ADAPTIVE PERMISSIONS</p> <p>Look beyond the credential to adjust based on changes to:</p> <ul style="list-style-type: none"> ▪ Physical or digital behavior ▪ Criminal watchlists ▪ Certification/training ▪ Operational technology |
|--|--|---|---|---|

USER FRIENDLY

The customizable, tile-based user interface was designed around two goals: to be the most intuitive and versatile in the industry. Dynamic color-based tiles alert the proper operators exactly when, where and why attention is needed.

UNIQUE INTEGRATION ABILITIES

SmarterAccess' back-end data engine was architected for seamless integration with virtually any subsystem. The integration engine translates the myriad of data formats into one unified language, creating a truly holistic security system. For example, customers have the power to integrate their preferred VMS, Visitor Management, Gunshot or Weapon Detection, HVAC, Readers, Intrusion Detection etc.

ACCESS CONTROL SOLUTIONS

Whether you prefer basic or advanced access control, SmarterAccess has your award-winning solution:

- **Traditional** - Role-based but easier to configure and operate at a value price
- **Intelligent** - Risk-adaptive access control with real-time controls fueled by data
- **Unified** - Integrate multiple legacy systems, and enhance them with intelligence

Standard Features

- Role-Based Access Control
- Risk-Adaptive Access Control
- Alarm Monitoring
- Event Logging
- Map Designer
- Video Management Interface
- Video Viewer & Verification (ONVIF Support)
- Video Manager
- E-mail Interface
- Anti-Passback
- Guard Tour
- System Administration
- FICAM
- FIPS 140-2
- TLS Encryption
- OSDP Supported Readers
- MIFARE, iCLASS, PIV Class Readers

System Options

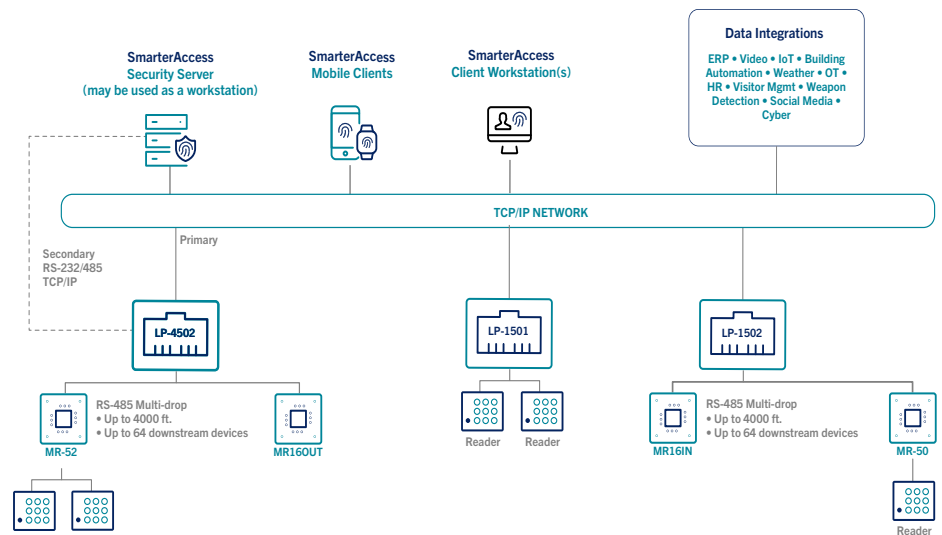
- Mass Notification
- Biometrics/Smart Cards
- Fire & Intrusion Annunciation
- ID Scanning/Badging
- Elevator Integration
- Intercom Integration
- OPC Server/Client

CENTRAL SERVICE REQUIREMENTS

Operating Systems	Windows 10, 2012 R2, Server 2016
CPU	i5 or better with 2GHz
Hard Disk Space	12 GB
Database Space	1 TB
Database Versions	MS SQL 2014/2017

Unifying Access Control with SmarterAccess

Seamlessly integrate, control and analyze all security inputs from virtually any source with SmarterAccess. Monitor and control access using a customizable and intuitive interface that's available from a mobile device, workstation or your SOC.



About Smarter Security

Smarter Security markets the world's most intelligent Entrance and Access Control solutions. Fastlaneturnstiles, Door Detectives and SmarterAccess harness the power of neural network technology to provide unrivaled intelligence to pedestrian access control. We secure more than half of the Fortune 100, providing security solutions known globally for high reliability at a lower total cost of ownership. Visit www.smartersecurity.com.



www.smartersecurity.com

©2020 Smarter Security. Smarter Security is a registered trademark of Smarter Security, Inc. © 2020 Mercury Security. All Rights Reserved.

For more information, email us at info@smartersecurity.com or call us at **800.943.0043**



Smarter Security is an American company headquartered in Austin, Texas.